

Educators' Guide to Rainforest Wild ASIA

For Preschoolers (N2 – K2)

Choose Your Adventure!



**Rainforest Wild
ASIA**



About Rainforest Wild ASIA

As the first adventure-based zoological park, Rainforest Wild Asia features 36 species of animals in habitats that simulate the environment where they are found naturally. Choose your adventure, from canopy to cavern and enjoy chance encounters with the animals.

Explore the 8 thematic zones:

The Karsts

Karsts are unique landscape shaped by the natural erosion of limestone over time. Southeast Asia is home to extensive tower-shaped karsts, which are replicated at **The Karsts** in Rainforest Wild Asia.



The Cavern

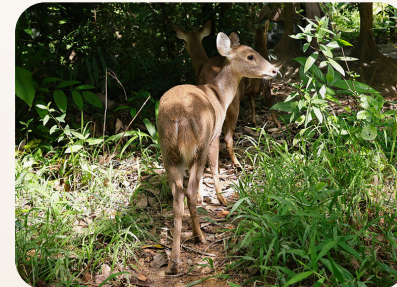
Caverns are caves with underground passages and chambers. Stretching 220m, **The Cavern** is inspired by Sarawak's Mulu Caves, one of Southeast Asia's largest and most complex cave systems, and a UNESCO World Heritage site.



Entrance Gorge



The Outpost



Forest Floor



The Canopy



Rock Cascade



Watering Hole

'Choose Your Wild' Experience

There are various paths you can take to explore Rainforest Wild ASIA. If you are facilitating learning journeys for very young children, we recommend that you attempt the **Elevated Walkway** and focus on the two routes indicated below.

Rainforest Wild ASIA is open daily from 9.00am – 6.00pm
(Last entry at 5.00pm)

Forest Treks

- 1 Log Crossing Trek
- 2 Karst Loop Trek
- 3 Forest Floor Trek
- 4 Root Hollow Trek
- 5 Predator Trek
- 6 Upper Stream Trek
- 7 Lower Stream Trek

Black Adventure

- 1 Adventure Base Camp
- 2 Wild Apex Adventure
- 3 Wild Cavern Adventure

Adventure+

- 1 Canopy Jump
- 2 AIA Vitality Bounce
- 3 Critter Crawl

 Elevated Walkway (Universal-access)

 Forest Treks

 Click here for
Ranger Talk
timings

 Click here to
download
map



Mandai
Wildlife West
Entrance

Elevated Walkway – **Shorter** Route

Directions:

Keep right at the two intersections (circled in white)

Estimated duration:

90 mins

Zones covered (in order of walking sequence):
Entrance Gorge → The Karsts → The Outpost →
Forest Floor → Watering Hole → The Cavern

Elevated Walkway – **Longer** Route

Directions:

Turn left at the 1st intersection to continue
onto the longer route

Estimated duration:

150 mins

Zones covered (in order of walking sequence):
Entrance Gorge → The Karsts → The Outpost →
Forest Floor → Rock Cascade → The Canopy →
Watering Hole → The Cavern

'Choose Your Wild' Adventure

Apart from the Elevated Walkway, you may choose to explore some or all of the **7 Forest Treks** if your students are game for it. Test their motor skills as they navigate boulder crossings, log bridges, and suspended walkways, while discovering tunnels, bubbling springs, and a walkthrough langur habitat.

Note: All Forest Treks are connected to the Elevated Walkway, allowing for flexible entry and exit at any time.

	1	2	3	4	5	6	7
Name of Trek	Log Crossing Trek	Karst Loop Trek	Forest Floor Trek	Root Hollow Trek	Predator Trek	Upper Stream Trek	Lower Stream Trek
Difficulty	Moderate	Easy	Moderate	Easy	Easy	Moderate	Moderate
Estimate Length	100m	200m	120m	160m	100m	120m	280m
Features	Boulder crossing, Log crossing, Stream	Uneven terrain, Animal spotting, Bridge	Boulder crossing, Log crossing, Animal spotting	Uneven terrain, Log crossing, Animal spotting	Uneven terrain, Animal spotting, Bridge	Boulder crossing, Bridge, Stream, Animal spotting	Boulder crossing, Bridge, Stream, Animal spotting, Log crossing

Look out for signages at the start of each Forest Trek. Here's how to interpret the signages :



Traverse uneven paths beneath strangling figs at **Root Hollow Trek**



Navigate a suspended bridge over water at **Karst Loop Trek**



Cross fallen logs bridges over a running stream at **Log Crossing Trek**



Pre-Visit

Planning A Learning Journey

1

Determine Learning Outcomes

Our park offers opportunities to achieve learning outcomes for any of the five learning areas in the NEL framework:

- **Aesthetics & Creative Expression:**
Facilitate animal-inspired art and craft activities
- **Discovery of the World:**
Explore animals in vast habitats, forest treks and cavern
- **Health, Safety & Motor Skills Development:**
Enhance gross motor skills as students navigate different terrains
- **Language & Literacy:**
Engage in conversations about plants and animals, and explore park signages to build a juicy word bank
- **Numeracy:**
Investigate patterns, sizes and shapes in nature

2

Get In Touch

Click [here](#) for information on admission charges and to register your interest in visiting our park.

Consider booking a programme to enhance the learning journey. Click [here](#) to book.

For self-guided learning journeys, review this resource and use it to facilitate learning outcomes.

3

Conduct A Recce Trip

Take note of the following:



Amenities:

Record locations and availability of toilets, water refill stations, shelters, first aid rooms, and food options.



Pathways:

Assess the elevation/terrain and consider accessibility for students with different abilities.



Time Required:

Account for the time needed to walk from the drop-off point to the park entrance.



Weather Preparation:

Think about protection against the sun and backup plans for inclement weather and weather-appropriate clothing and gear required.

Register with us at least 2 weeks in advance to qualify for recce trip at school rates.



Pre-Visit

Prepare Your Students For A Safe Learning Journey in Rainforest Wild Asia

1 Introduction

Introduce the rainforest habitat and its animals to your students before your visit:

- Ranger Buddies Virtual Show: [Rainforest Friends](#)
- Use this [teacher resource](#) to facilitate discussion on animals that live in the different layers of a rainforest.

2 Park Tips and Etiquette

Rainforest Wild ASIA provides an experience similar to that of a national park. The animals roam in vast habitats and may not be always visible to guests. Keep your eyes peeled for movements amongst the vegetation and enjoy chance encounters with the rainforest critters.

1. Stay on the Path

Forest Treks are narrow. Stay close and trek along the designated gravel trails only.

2. Safety First

Be careful of uneven ground and flowing rivers along the Forest Treks. Seek shelter during inclement weather.

3. Respect Nature

Appreciate the plants and animals by maintaining a safe distance and leaving them undisturbed.

4. Keep Volume to a Minimum

Be mindful of others by keeping noise levels low, especially near the animals or other guests.

5. Take Your Trash with You

Like national parks, our park does not have rubbish bins. Trash must be brought out and disposed of properly when leaving.

3 Get Ready Together!

Discuss with your students and decide what to bring and wear for a learning journey to Rainforest Wild ASIA, and why each item is important.



***Wear covered shoes with good traction for the Forest Trek routes.**



Here are some additional items to consider:

- Insect Repellent



- Binoculars



During Visit

Try Out Activities With The Following Themes!



1 Who Lives Here?

Use the **See-Think-Wonder** Thinking Routine to investigate animals living in the different zones.

Prompting Questions:

- Use three words to describe this place (e.g., trees, dark, wet, tall, stones).
- What animals do you think might live in this habitat or this layer of the rainforest?
- If you were this animal, where would you sleep/rest/play/eat?
- I wonder where is their hiding spot.



2 Move It Move It!

Animals move differently to get around. Encourage children to observe how the animals move.

Additional Activities:

- What body parts do the animals use to move? Get the class to form one animal and move together.
- Pair children up. Get them to take turns to imitate an animal's movement and guess the animal.
- As transition, organise the class to move like an animal to the next exhibit.



3 A Deep, Dark Cavern

The Cavern is home to various animals that have adapted to life in the dark. Take students on a scavenger hunt to discover these animals in different areas of the cavern.

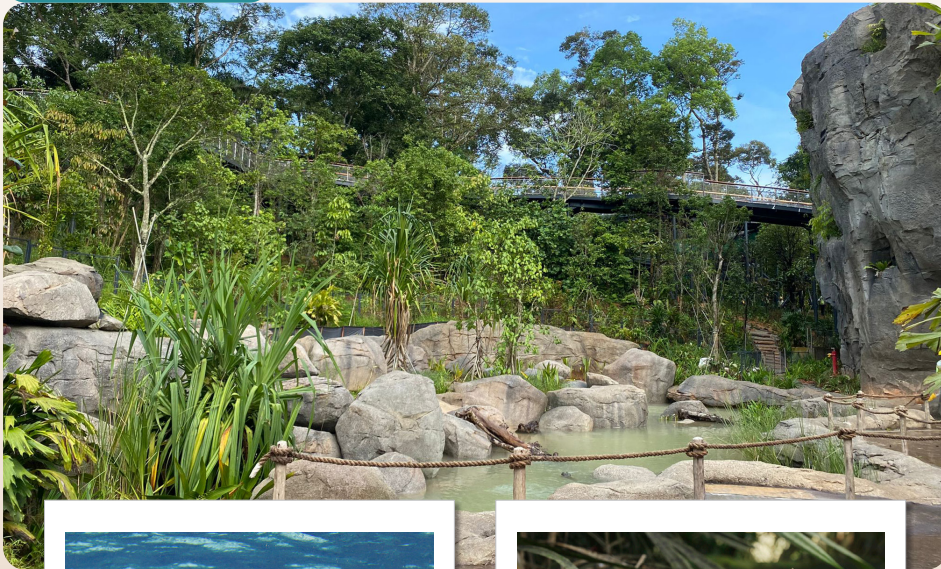
Additional Prompting Questions:

- How are these cavern animals similar to/different from one another? (i.e. no. of legs, how they move, size)
- What kind of food might they find in a cavern? (e.g., rats, worms, insects, decaying matter)
- Spot shapes/patterns on the rocks and name them!

Entrance Gorge & The Karsts

Have You Encountered These Animals?

Entrance Gorge

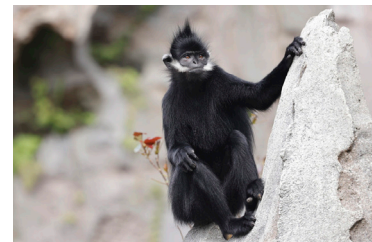


Asian Arowana



Southern River Terrapin

The Karsts

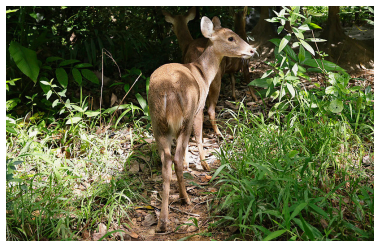
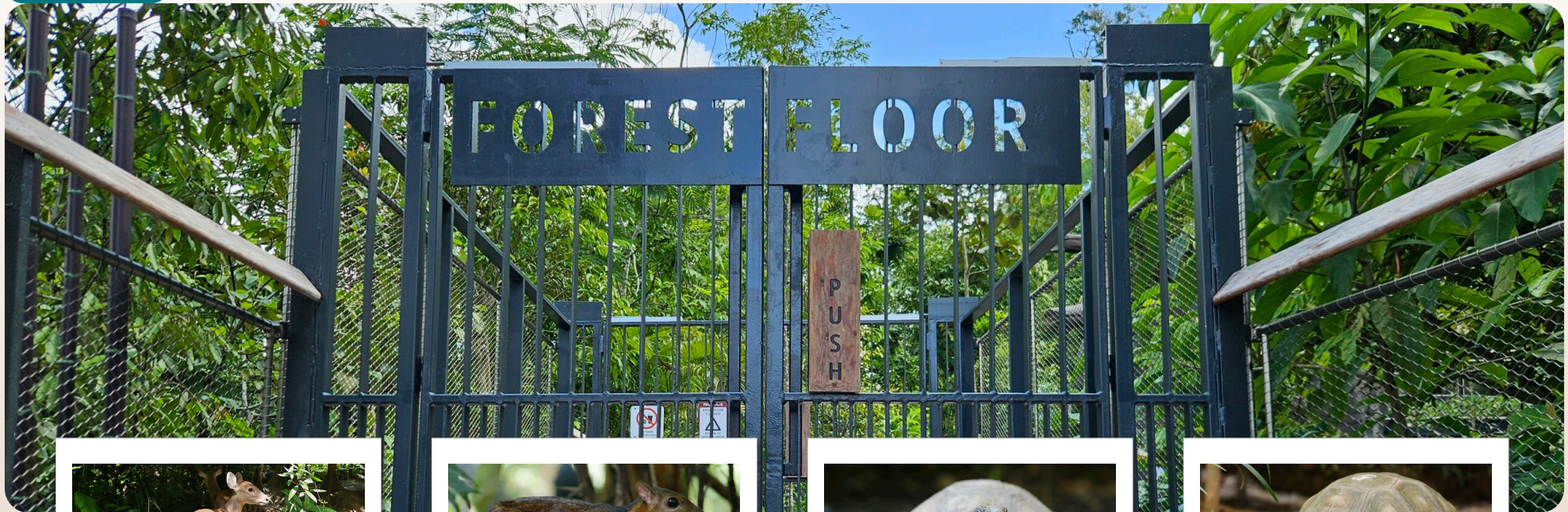


Francois Langur

Forest Floor

Have You Encountered These Animals?

Forest Floor



Hog Deer



Lesser Mousedeer



Asian Brown Tortoise

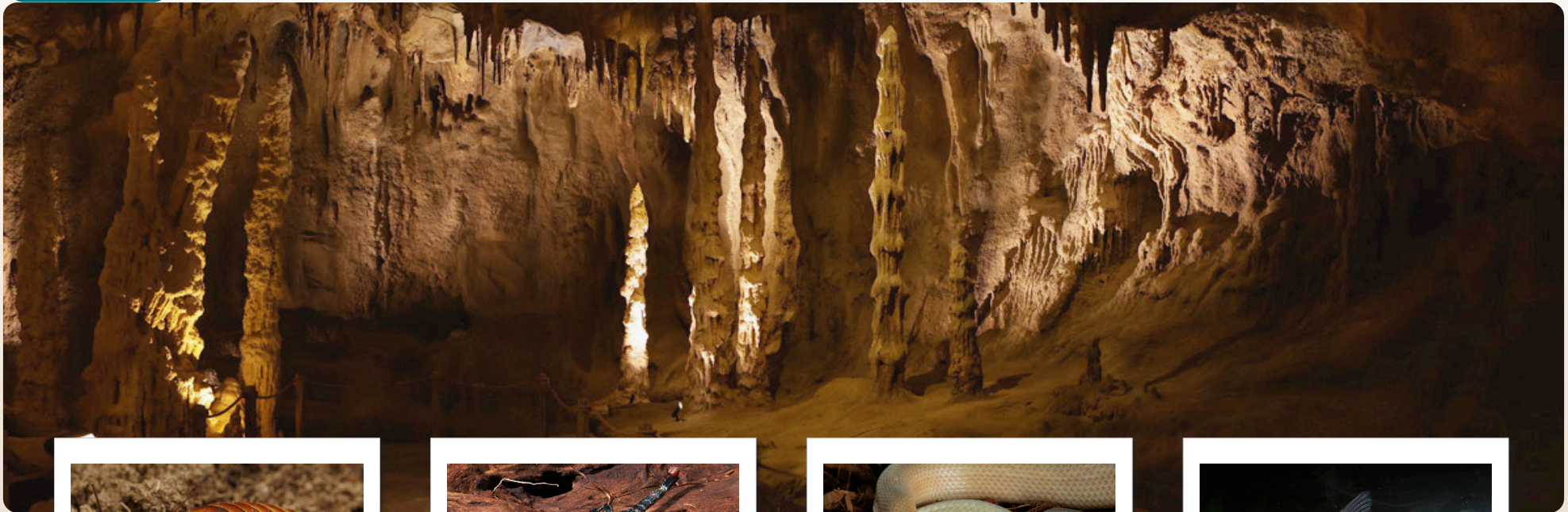


Elongated Tortoise

The Cavern

Have You Encountered These Animals?

The Cavern



Madagascar Hissing
Cockroach



Asian Forest Scorpion



Cave Racer



Soro Brook Carp

... And More

Animals You Might Encounter Along the Longer Route



Watering Hole

Malayan Tapir



Rock Cascade

Malayan Tiger



The Canopy

Javan Langur



Watering Hole

Sun Bear



Rock Cascade

Dhole



The Canopy

Red-shanked Douc Langur

Post-Visit



3 Tips For Post-Learning Journey Activities

1

Extend Learning In Your Classroom

Home-school project – invite children to find out more about one animal they saw during the visit and create a diorama of the animal in its natural habitat.

Some prompting questions:

- Which part of the rainforest does this animal live in? (e.g., Karst, Cavern, River/Streams, Forest Floor, Understorey, Canopy, Emergent)
- What does it eat?
- How does it move?

2

Nature Walk

Explore a green space near your school and have your students describe the habitat of the animals e.g., grass, trees, bright, warm.

- How do these animals move around?
- Where might they sleep/rest?
- Where do they get water and food?

3

Useful Resources

Ranger Buddies Virtual Shows:

- Find out why insects are buddies, not baddies on [Not Bugged By Bugs](#).
- Learn what we can do to protect rainforests and make responsible choices for wildlife on [Fight Deforestation](#).
- Meet and discover more about amazing native animals on [Singapore WOWlife](#).

Animals We Love Series:

Try out these activities from our Animals We Love Series to learn more about rainforest animals:

- Animals We Love: [Mousedeer](#)
- Animals We Love: [Orangutans](#)
- Animals We Love: [Tiger](#)
- Mother Tongue Versions: [CL](#), [ML](#), [TL](#)